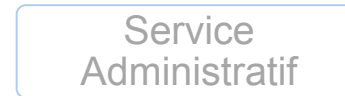
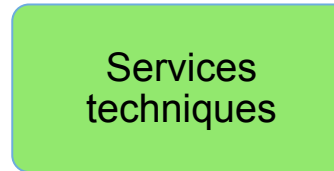
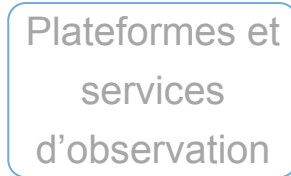
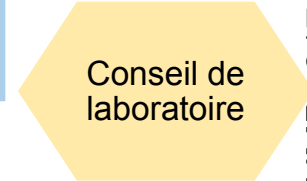
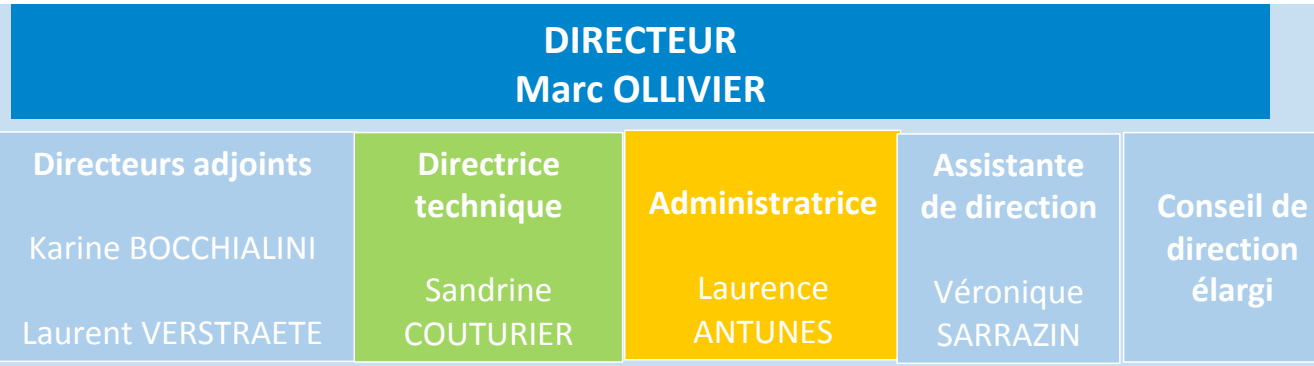




université
PARIS-SACLAY



INSTRUMENTATION
Jean-Christophe LE CLEC'H (IR2 -CdP)

Jean-Pierre DUBOIS (IR1)
Paolo HAFFOUD (IR*)
François LANGLET (IEHC)
Hugo LE BARS (IR*)
Guillaume LEQUERTIER (IR*)
Obadias MIVUMBI (ASI)
Claudia RUIZ de GALARETTA FANJUL (IR2)

OPTIQUE
Yuying LONGVAL (IRHC- CdP)

Pierre GUIOT (IR*)
Vincent HAMM (IR2 -CdP)
Christian KETCHAZO (IR*)
Benoît LECOMTE (IEHC)
Anne PHILIPPON (IR1-CdP)
Xueyan SONG-ZHANG (IR1)

INFORMATIQUE - IDOC
Gilles POULLEAU (IRHC-CdP)

Hervé BALLANS (IR1 - CdP)
Stéphane CAMINADE (IR2-CdP)
Martine CHANE-YOOK (IGR1)
Karin DASSAS (IRHC)
Marc DEXET (IR2-CdP)
Brigitte GONDET (IRHC- CdP)
Imène LAJILI (IR*)
Clément MASSIAS (AJT*)
Magali MEBSOUT (IR*)
Claude MERCIER (IR1)
David PICARD (IE*)
Elie SOUBRIE (IR1)
Laurent VIBERT (IRHC - CdP)

STATION D'ÉTALONNAGE
Paul LAMI (IRHC)

Mathieu CONDAMIN (IR2)
Serge FRANCOIS (AI)
Jérémy HANSOTTE (AI)
Christine NICOLAS (IEHC)
Philippe PRADEL (AI)
Catherine TAMIATTO (IECN)
Stéphane TROCHET (AI)

MECANIQUE/THERMIQUE
Antoine ARONDEL (IR2)

Julien BARBAY (AI)
Mehdi BOUZIT (IECN)
Bruno CRANE (AI)
Clémence DE JABRUN (IR*)
Cydalise DUMESNIL (IRHC -CdP)
Antoine GENIES (IR*)
Fabien LABANARD (AI*)
Jean-Christophe LE CLEC'H (IR2-CdP)
Arnaud LE NEVE (Apprenti *)
Gilles MORINAUD (IEHC)
Gérard ROUILLE (IR1)

ELECTRONIQUE
Véronique HERVIER (IEHC)

Vincent CARLIER (IR1 - CdP)
Mireille CHAIGNEAU (TCE)
Volcan EFE (IE*)
Ludovic GONNOD (IEHC)
Cyrille HANNOU (IGE2)
Stéphane TOSTI (IECN)

Organigramme de l'institut d'astrophysique spatiale – UMR8617